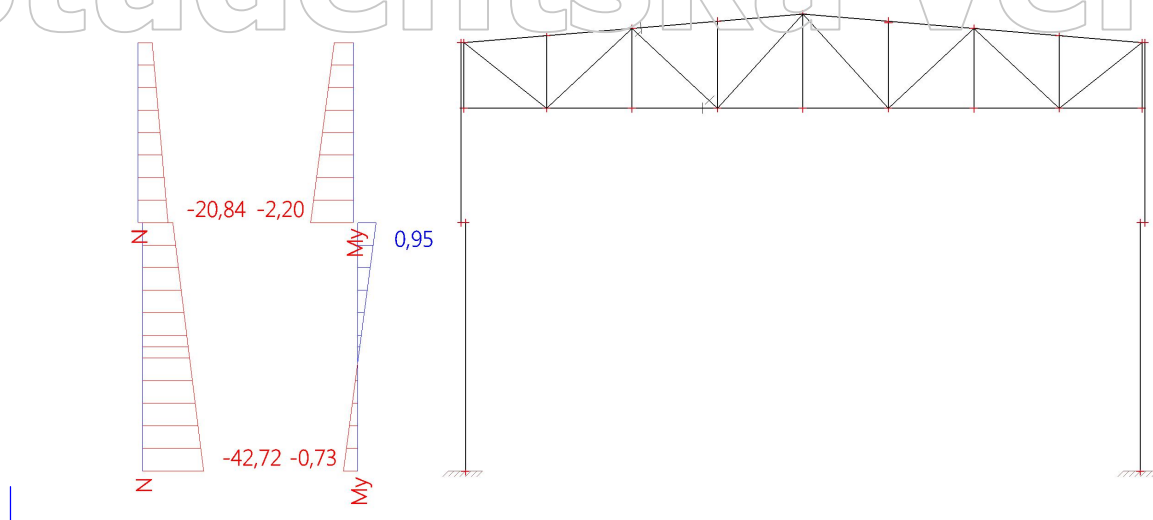
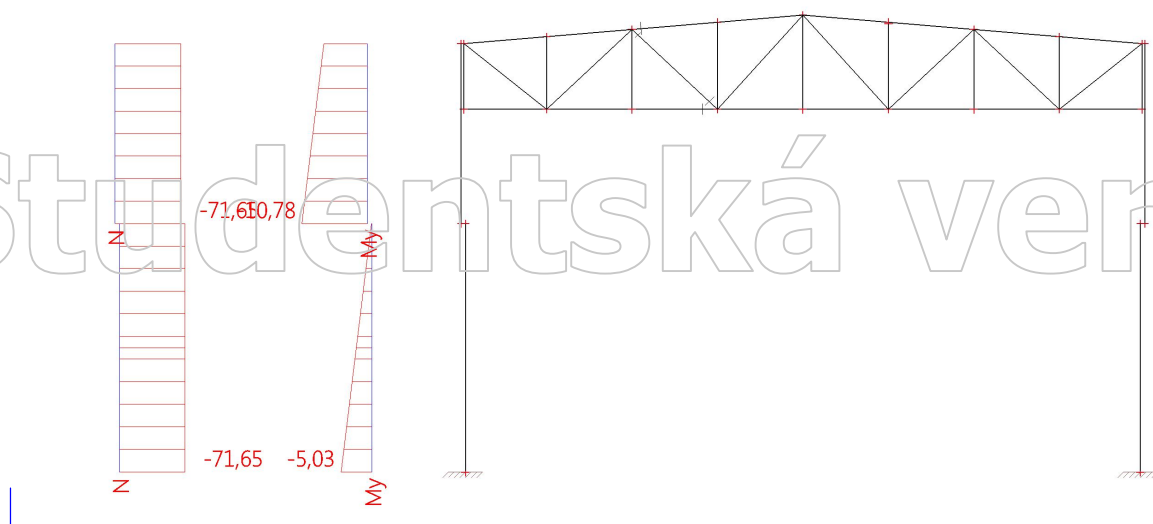


2. VNITŘNÍ SÍLY SLOUP

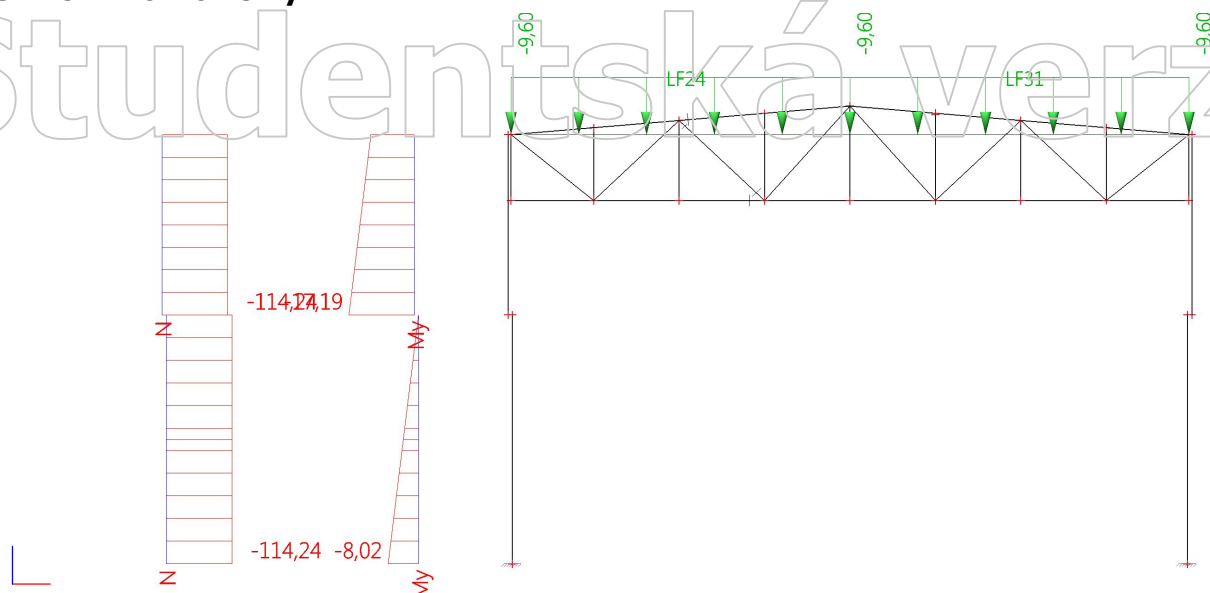
2.1. ZS1 - stálé (vlastní tíha vazník a sloup)



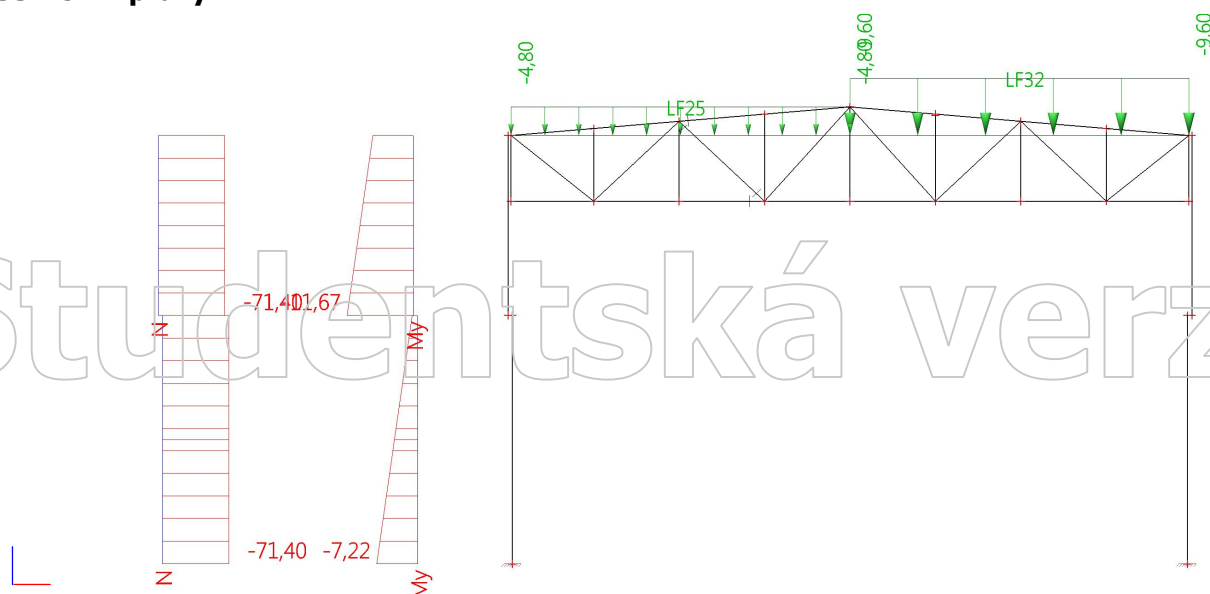
2.2. ZS1 - stálé (vaznice a panely)



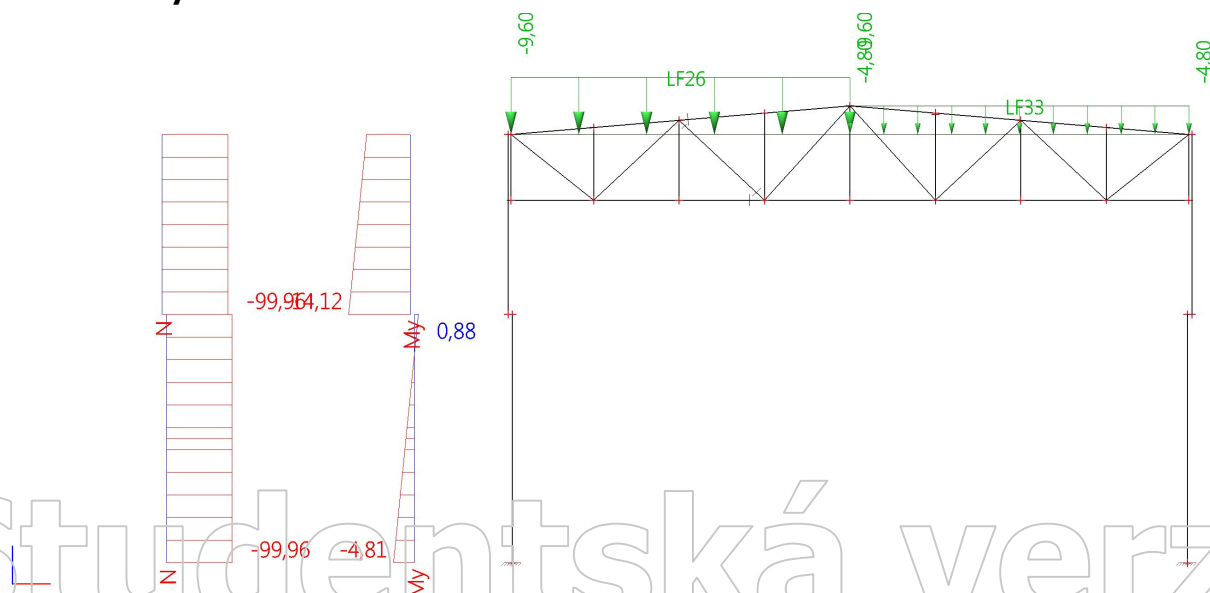
2.3. ZS2 - sníh rovnoměrný



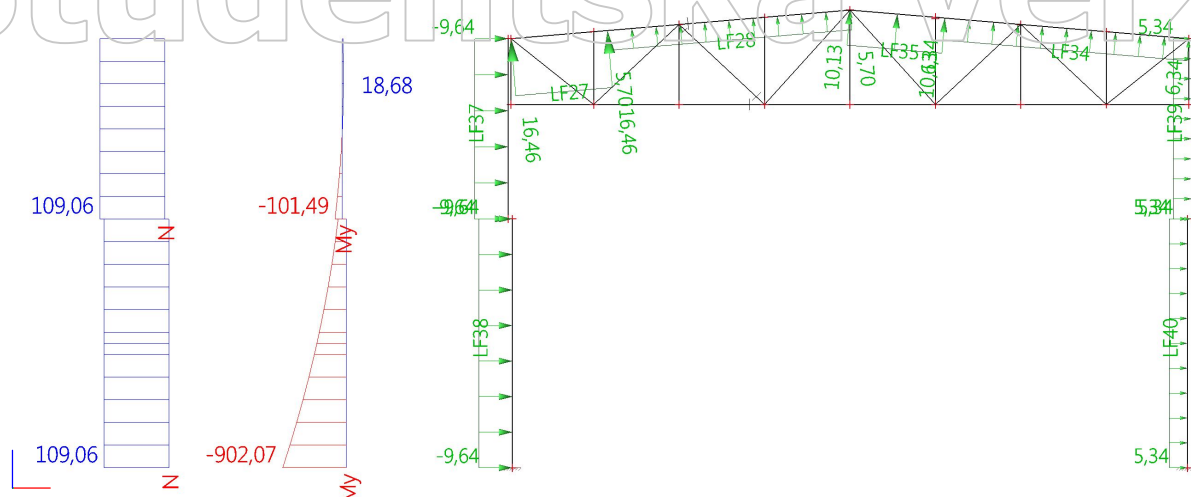
2.4. ZS3 - sníh pravý



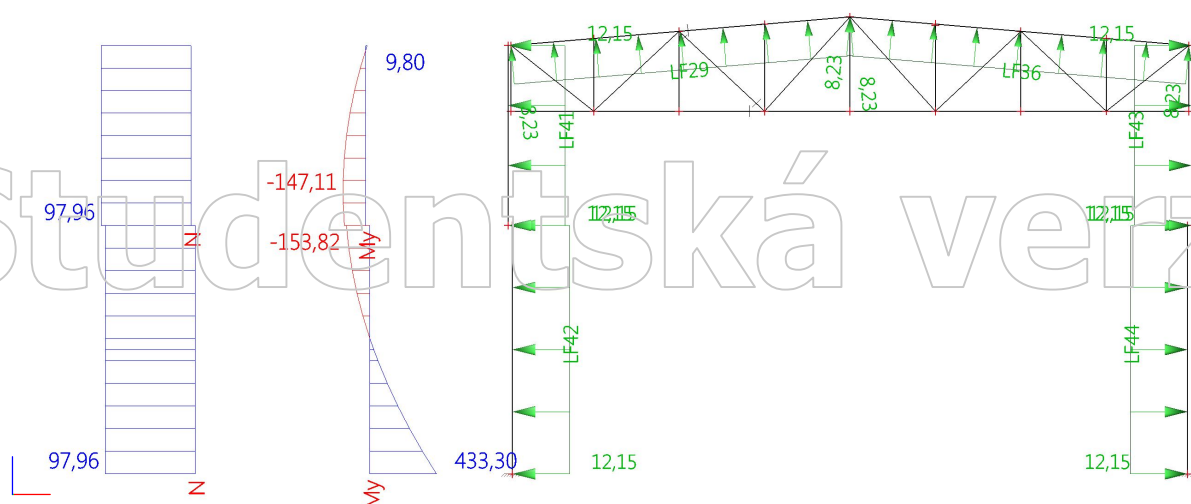
2.5. ZS4 - sníh levý



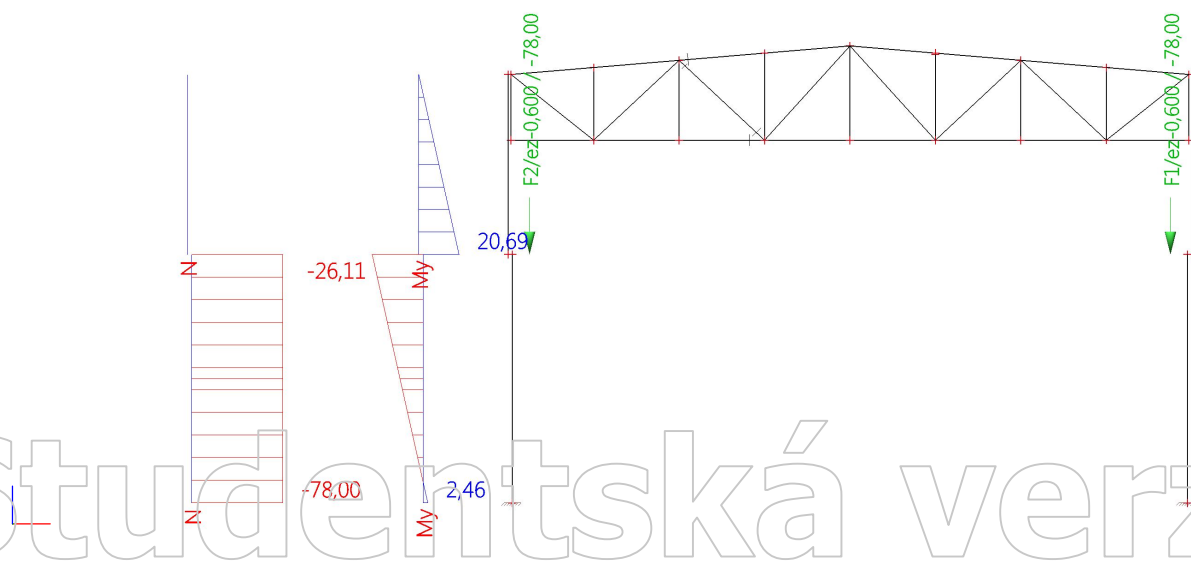
2.6. ZS5 - vítr příčný



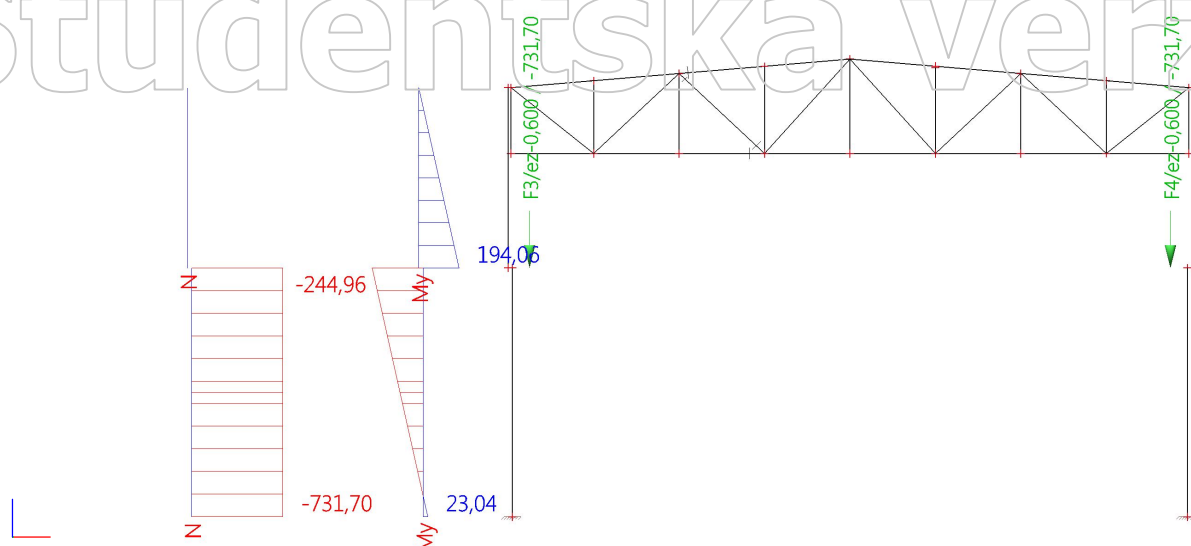
2.7. ZS6 - vítr podélný



2.8. ZSJ1 - stálé jeřábovka



2.9. ZSJ2 - svislé jeřáby



2.10. ZSJ3 - příční jeřábů

